

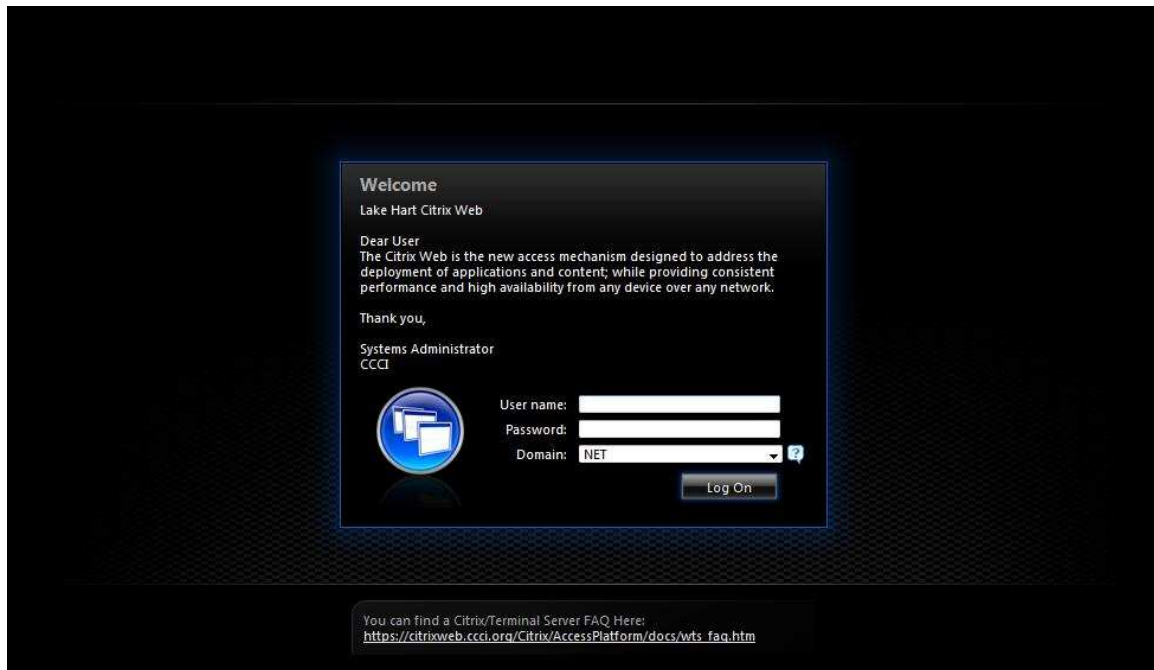
# User Guide to Citrix Web Interface

## How to logon to the Web Interface

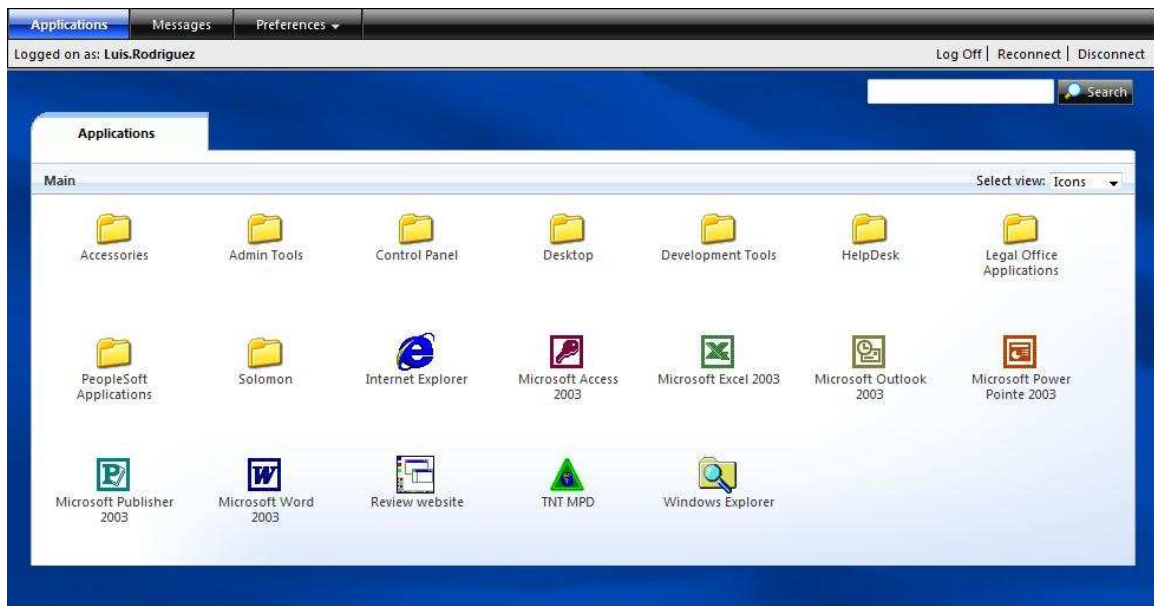
Once you have connected to the Internet you will need to log in to the Web Interface to receive a list of configured applications. You can do this by browsing to

<https://citrixweb.ccci.org/Citrix/AccessPlatform/auth/login.aspx>.

- Enter your username and password and click the **Log In** button.



- You will be presented with a list of applications you have access to. Click on an application icon to launch the associated application.



## Install the ICA 32-bit Windows Client Or Choose Multi-Platform Java Client

If you do not already have the latest version of the Citrix ICA client installed and are connecting from a Windows 32 bit platform you will be promoted to download and install the Citrix Client.

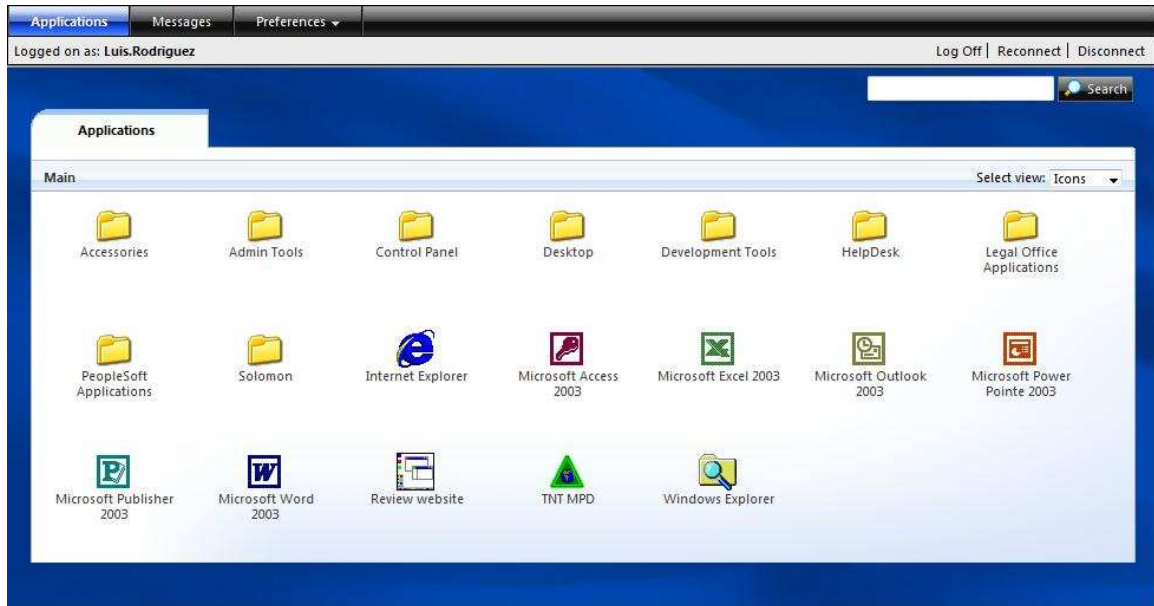


- Click Download to install the Citrix ICA Client.
- ❖ **Note:** you do not need to restart your browser.
- Or Click on “Try Alternative Clients” and Select the “ICA Java Client”
  - a) The First time you launch an Citrix Web application using the Java Client you’ll be prompted to accept a Security Certificate.
  - b) Click “Run” to Continue

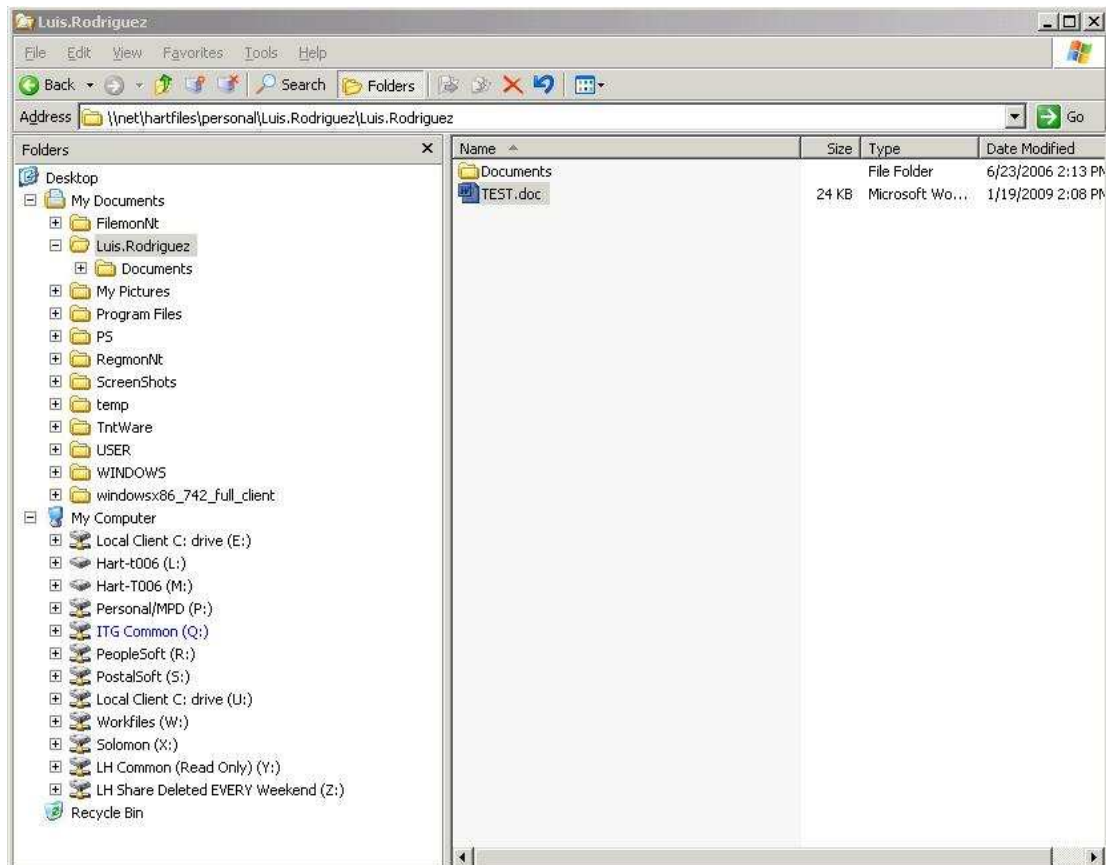


## Running Applications and Browsing Local & Network Drives

- To launch an application all you need to do is double-click on the desired application icon.



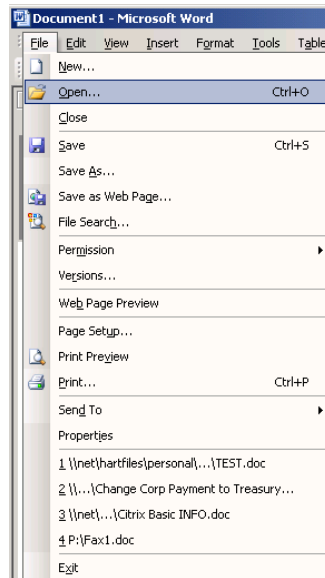
- To Browse Local and Network Drives Run/Launch “Windows Explorer”. **You Computer Local Drive will be mapped to the Drive letter E: (Local Client C: drive (E:))**



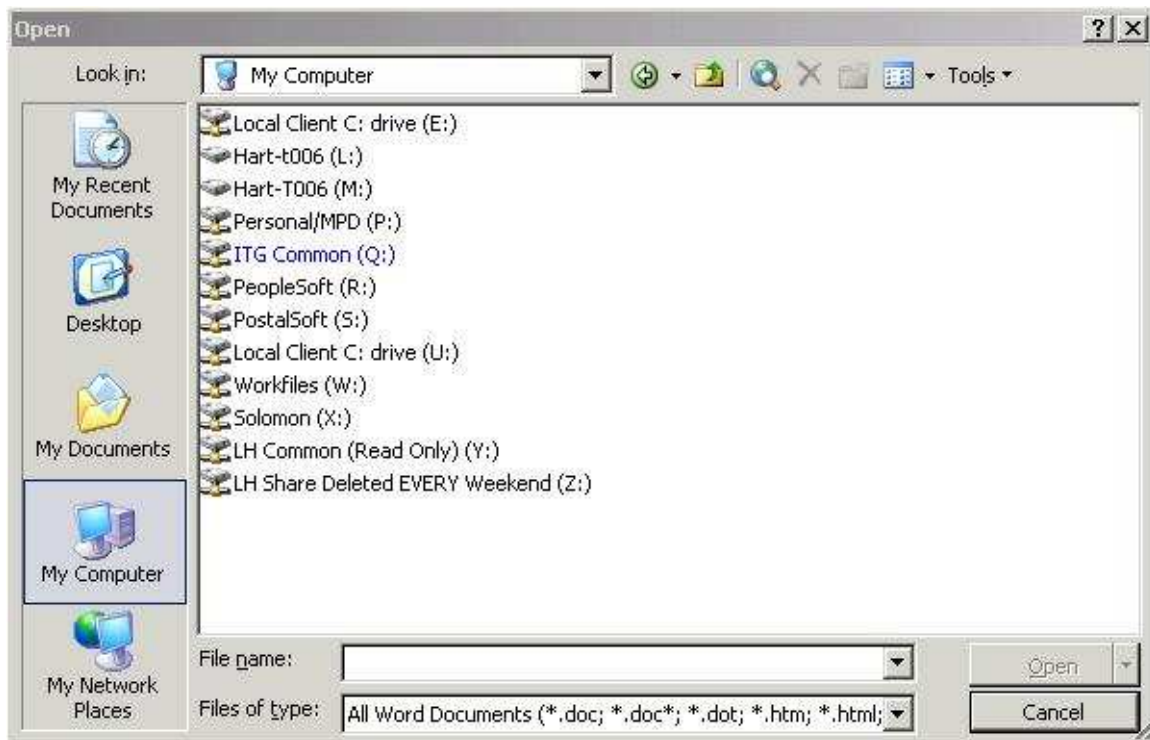
- ❖ If using Java Client You'll be prompted to Grant access to Your local Drive:



- From Windows Explorer You can access your Files and launch the Application associated with the File type on a new Seamless Windows.
- To access Files from a already launch application, use the File “Open” Menu.



- Click on My Computer To access your Local and Network Drives



- To “Exit” an application, just click on the (X) button or select File->Exit. You can also click log-Of f from your web interface session which in turn will close or you open Citrix Session/Applications.